

Group project: T-Low

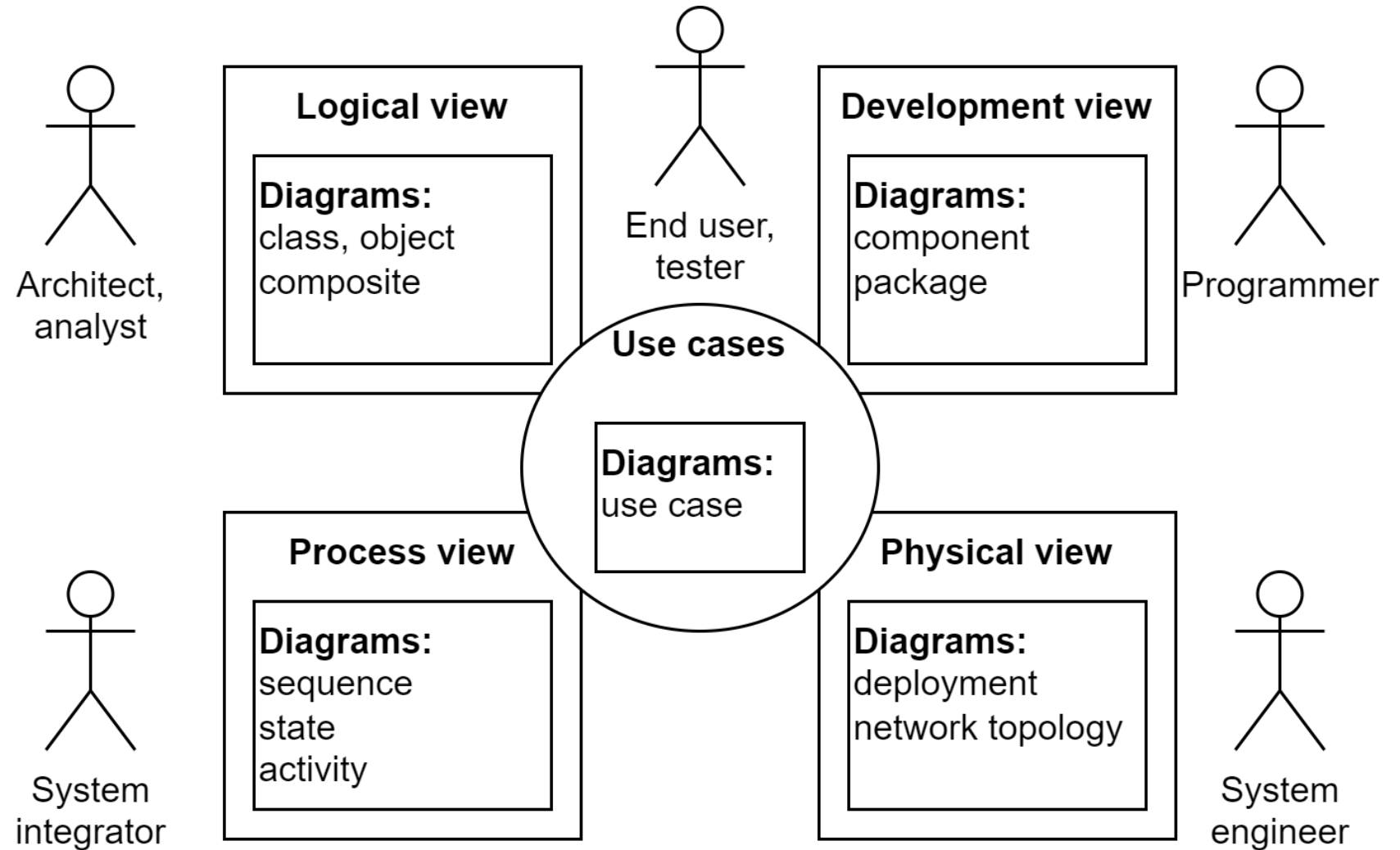
COMP.SE.210 Large Scale Software Design
Spring 2024

T-Low food delivery service

- Design a system for food delivery
 - Focus on architecture-level design
 - Must think about quality requirements
- Actors
 - Restaurant
 - Customer
 - Courier
 - Operator



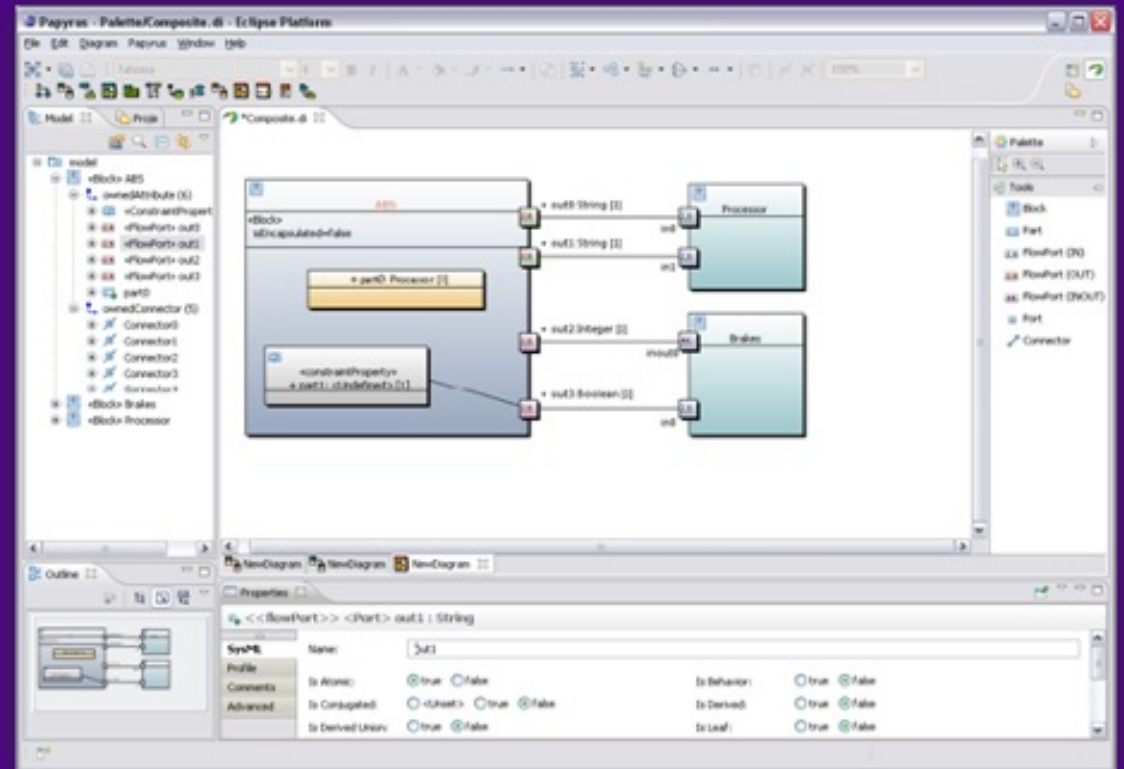
4+1 method



Adapted & re-drawn from Kruchten (1995)

UML tool: Eclipse Papyrus

- Creates an actual UML model
- ...not just diagrams
- Can re-use modeled concepts
- Teachers may use your models in research



<https://www.eclipse.org/papyrus/>

Submissions

1. Intermediate

- Thursday, 11th April 2024
- Only requirements and use cases
 - The scenarios are the +1 part of the 4+1 model

2. Final

- Saturday, 11th May 2024
- Includes everything ...also intermediate submission corrected after feedback!
- Max. 4000 words for document
- Two parts to return:
 - 4 UML charts drawn also as separate submission (Papyrus files)
 - Assignment as PDF

See

<https://plus.tuni.fi/comp.se.210/spring2024/assignment/assign/>

Grading

Item	Points
Justifications	250
4+1 views are well documented and complete, covering the requirements; 80 pts for each view	400
General quality	100
Total	750

See

<https://plus.tuni.fi/comp.se.210/spring2024/assignment/assign/>

Group project facilitation events

- Wednesday 20.3. 10:15 TB109 + Zoom
 - Use cases
- Wednesday 17.4. 10:15 TB109 + Zoom
 - Design, diagrams (components, deployments, ...)
- Join as a group!
 - https://teams.microsoft.com/l/team/19%3A5nNcNw8Sw-tU_EMDPvIIF_7vteSUG7IhTPZHdMWO9c1%40thread.tacv2/conversations?groupId=c59686e1-d15d-43d1-bfb1-d91341347c04&tenantId=fa6944af-cc7c-4cd8-9154-c01132798910
- Bonus points for attendance

Break a leg!



Pixabay